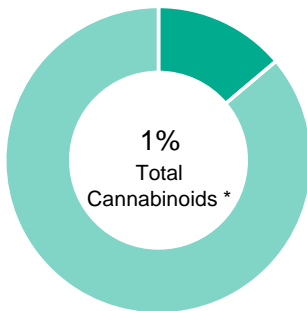


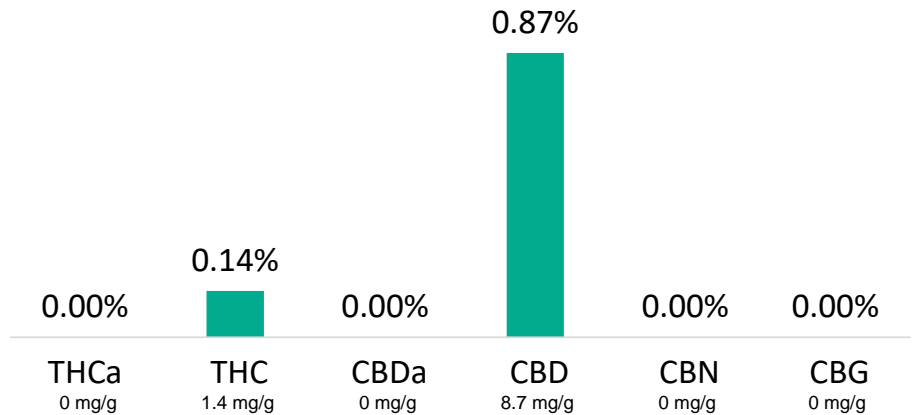
## Pet Tincture

<b>Batch ID:</b>	1903001	<b>Test ID:</b>	2522535.048
<b>Reported:</b>	12-Mar-2019	<b>Method:</b>	TM01
<b>Type:</b>	Concentrate		
<b>Test:</b>	Potency		

## CANNABINOID PROFILE



- Total Potential THC 0.14% \*\*
- Total Potential CBD 0.87% \*\*



\* Total Cannabinoids result reflects the absolute sum of all cannabinoids detected.

\*\* Total Potential THC/CBD is calculated using the following formulas to take into account the loss of a carboxyl group during decarboxylation step.


Total THC = THC + (THCa \* (0.877)) and Total CBD = CBD + (CBDa \* (0.877))

% = % (w/w) = Percent (Weight of Analyte / Weight of Product)

## NOTES:

Free from visual mold, mildew, and foreign matter.

## FINAL APPROVAL

  
 Greg Zimpfer  
 12-Mar-2019  
 2:29 PM

PREPARED BY / DATE

  
 David Green  
 12-Mar-2019  
 3:38 PM

APPROVED BY / DATE

Testing results are based solely upon the sample submitted to Botanacor Laboratories, LLC, in the condition it was received. Botanacor Laboratories, LLC warrants that all analytical work is conducted professionally in accordance with all applicable standard laboratory practices using validated methods. Data was generated using an unbroken chain of comparison to NIST traceable Reference Standards and Certified Reference Materials. This report may not be reproduced, except in full, without the written approval of Botanacor Laboratories, LLC. ISO/IEC 17025:2005 Accredited A2LA Certificate Number 4329.02



Certificate #4329.02



### Pet Tincture

**Batch ID:** 1903001

**Reported:** 12-Mar-2019

**Type:** Concentrate

**Test:** Micro

### MICROBIAL CONTAMINANTS

Test	Result	Unit
<b>Total Aerobic Count</b>	None Detected	CFU/g
<b>Total Coliforms</b>	None Detected	CFU/g
<b>Total Yeast and Molds</b>	None Detected	CFU/g
<b><i>E. coli</i></b>	None Detected	CFU/g
<b><i>Salmonella</i></b>	None Detected	CFU/g

\* CFU/g = Colony Forming Unit per Gram

\*\* Total Yeast and Molds values are recorded in scientific notation, a common microbial practice of expressing numbers that are too large to be conveniently written in decimal form.

Examples:  $10^2 = 100$  CFU  
 $10^3 = 1,000$  CFU  
 $10^4 = 10,000$  CFU  
 $10^5 = 100,000$  CFU

#### NOTES:

Free from visual mold, mildew, and foreign matter.

### FINAL APPROVAL

  
 Vicente Contreras  
 12-Mar-2019  
 10:25 AM

  
 David Green  
 12-Mar-2019  
 10:38 AM

PREPARED BY / DATE

APPROVED BY / DATE

*Testing results are based solely upon the sample submitted to Botanacor Laboratories, LLC, in the condition it was received. Botanacor Laboratories, LLC warrants that all analytical work is conducted professionally in accordance with all applicable standard laboratory practices using validated methods. Data was generated using an unbroken chain of comparison to NIST traceable Reference Standards and Certified Reference Materials. This report may not be reproduced, except in full, without the written approval of Botanacor Laboratories, LLC.*

## Pet Tincture

<b>Batch ID:</b>	N/A	<b>Test ID:</b>	5383650.024
<b>Reported:</b>	11-Mar-2019	<b>Method:</b>	TM04
<b>Type:</b>	Concentrate		
<b>Test:</b>	Residual Solvents		

## RESIDUAL SOLVENTS

Solvent	Reportable Range (ppm)	Result (ppm)
<b>Propane</b>	100 - 2000	0
<b>Butanes</b> (Isobutane, n-Butane)	100 - 2000	0
<b>Pentane</b>	100 - 2000	0
<b>Ethanol</b>	100 - 2000	0
<b>Acetone</b>	100 - 2000	0
<b>Isopropyl Alcohol</b>	100 - 2000	0
<b>Hexane</b>	6 - 120	0
<b>Benzene</b>	0.2 - 4	0.0
<b>Heptanes</b>	100 - 2000	0
<b>Toluene</b>	18 - 360	0
<b>Xylenes</b> (m,p,o-Xylenes)	43 - 860	0

## NOTES:

Free from visual mold, mildew, and foreign matter.

## FINAL APPROVAL



 Sam Smith  
 11-Mar-2019  
 5:39 AM



 David Green  
 11-Mar-2019  
 7:53 AM

PREPARED BY / DATE

APPROVED BY / DATE

Testing results are based solely upon the sample submitted to Botanacor Laboratories, LLC, in the condition it was received. Botanacor Laboratories, LLC warrants that all analytical work is conducted professionally in accordance with all applicable standard laboratory practices using validated methods. Data was generated using an unbroken chain of comparison to NIST traceable Reference Standards and Certified Reference Materials. This report may not be reproduced, except in full, without the written approval of Botanacor Laboratories, LLC. ISO/IEC 17025:2005 Accredited A2LA Certificate Number 4329.02



Certificate #4329.02